



AGAIUTIM
NUNE *The Place of God*

Camp Agaiutim Nune
Staff/Coaches
Information Packet
ALASKA 2023

A Description
of an
Alaska District Assemblies of God
Project
Approved by the
Alaska Assemblies of God District
&
Assemblies of God US Missions

Alaska District Superintendent—Bill Welch
AGUS Missions-Alaska Camp AN Director—Jim Schulz
AGUS Missions-Alaska | Camp AN Assistant Directors Phillip Boswell & Terry Hull

Alaska Assemblies of God
1048 W. International Airport Rd., Suite 101
Anchorage, AK 99518
(907) 278-4567 Phone Fax (907) 278-4560
E-mail jimschulzalaska@gmail.com or
pastorphillipb@gmail.com
thull@voicetothevillage.net

Welcome!

We would like to take this opportunity to express our appreciation to the Holy Spirit for directing your heart to the great need in Alaska. Thank you for being obedient to the Lord.

As you will note below, MAPS is a great arm of the Assemblies of God Missions ministries. While going through MAPS is optional, it is encouraged as it provides a great opportunity for laymen to get involved in missions' ministries and projects both in the US and around the world. We encourage groups to clear through MAPS for three reasons:

- 1) By going through MAPS your local church will receive missions giving credit through our national headquarters.
- 2) By going through MAPS your expenses are tax deductible.
- 3) By going through MAPS there is insurance that can be purchased for each member of the group.

Thank you for being a part of the great mission's work God is doing in Alaska.

History of MAPS (Missions America Placement Service-Division of Home Missions):

This great work of MAPS began in Utah and Idaho under the name, "Craftsmen for Christ" which now, as MAPS, reaches around the world with every conceivable volunteer work force and skill imaginable. To God be the glory!

Since 1917, the Holy Spirit has allowed the Assemblies of God to be a part of the great work He is doing in this "Great Land" called the land of the midnight sun—Alaska. From small beginnings with our first missionaries, Charles and Florence Personeus, God has helped the Assemblies of God become one of His great tools. God has also allowed us the privilege of being in more villages and towns than any other religious group. This is a responsibility we do not take lightly. Many missionaries, pastors and staff have come to Alaska to lead men and women to the "eternal gold" of salvation. Today, along with many churches and other ministries, we have only scratched the surface of the great harvest field to be reaped. Much of the physical work accomplished has been with the help of MAPS—men and women who have sacrificed and answered the call. They have come to help, given of their finances, time, and skills. They have helped to build the Kingdom of God. We thank God for the men and women who have risen to the occasion. It can be said of each, both past and present, (Nehemiah 4:6) "...for the people worked with all their heart."

God bless you! May "the God of peace...make you perfect in every good work to do His will." (Hebrews 13:20,21)

MAPS -ALASKA

GENERAL GUIDELINES AND INFORMATION

You are about to embark on an exciting adventure! We trust these next few days will be the best combination of activity, adventure, new acquaintances, experiences, and ministry possible. This is an opportunity of serving the Lord in a very meaningful and productive way, becoming a part of a mission's effort, and at the same time enjoying the magnificent state of Alaska. With all its beauty, majesty, wildlife, sports (fishing for instance), sightseeing, and cross-cultural heritage, you will not want to miss a single minute of this time. Alaska is so vast that a single description will not suffice to whet your appetite. Each geographical area will have its own unique beauty, brash harshness, ethnic flavor, fishing, and sightseeing. Alaska is a diverse and fascinating state!

Some interesting facts to learn about Alaska:

- You will find many varied Alaskan Native peoples, each with their own rich culture and heritage.
- It is the 49th State of the United States—larger than Spain, France & Germany combined!
- It covers a vast 586,412 square miles.
- The heaviest snowfall in Alaska—Thompson Pass with 974.5 inches.
- Tallest mountain is Denali (formerly Mt. McKinley) at 20,320 feet. Denali was the original name for the mountain.
- Largest natural freshwater lake in Alaska is Lake Iliamna at 1,150 sq. miles.
- Longest river is the Yukon River at 1,400 miles in Alaska—1,875 total.
- Largest glacier is the Bering Glacier at 2,250 sq. miles.
- World's largest concentration of bald eagles along the Chilkat River north of Haines with more than 3,500 bald eagles gathering in the fall and winter months.
- America's biggest earthquake occurring March 27, 1964, Good Friday, measuring 8.6 which has been revised to 9.2 by today's measurements. This is the strongest ever recorded in North America.
- Second greatest tidal surge in North America at 38.9 feet near Anchorage in Upper Cook Inlet.
- Approximately one third of Alaska lies above the Arctic Circle. This is a point at which the sun does not set for at least one day at summer solstice and does not rise for at least one day at winter solstice. The furthestmost north community of Utqiagvik (formerly Barrow) does not see the sun set from May 10 to August 2 and in the winter, it does not rise for 67 days.
- Alaska has Igloos, Ice worms, and Ice fog and the Iditarod Trail Sled Dog Race.

Policy for Ministry Personnel

To fulfill your goals and those of the Alaska District, Alaska Assemblies of God Missions, Camp Agaiutim Nune and to make your trip as meaningful and enjoyable as possible, we would like to stress these factors: **cooperation, coordination and conduct**. These are not rules, nor are they absolutes—simply suggestions that we trust will bring the greatest fulfillment to the project and to you.

- I. **COOPERATION** with District, Missions and Camp leadership is always necessary. While the leadership may not always be right on a given issue, he/she/they do understand much about Alaska and living within Alaska's various cultures and climates. Share their burden that the Holy Spirit has given them.
- II. **COORDINATION** with the District, Missions and Camp leadership is crucial. A lot of responsibility for the project and its ministry rests upon them. The District, Missions and Camp leadership will exercise final coordination and approval for all parts of the project. The District, Missions and Camp leadership will work hand in hand with each member of the team to provide them with as much detail and planning for the project as possible. It is expected that each member of the camp team will reciprocate the same. Each Camp A.N. team member is expected to follow closely the instructions and directions given to them by the Camp Director. In this you will find safety from situations that you may not understand or of which you may not be aware, and you will find efficiency to accomplish the task in the best way possible. Working together, Alaska's unique techniques and opportunities will provide for a great time enjoyed by all.
- III. **CONDUCT** is always important, and a positive attitude is vital to ensure a joyful and successful trip and project. Here are a few suggestions:
 - A. **GENERAL ATTITUDE:** A Christ-like and friendly attitude is always acceptable, especially under pressure. Being away from home, spouse, family, and familiar surroundings can create what is called "culture shock." Many times, this is manifested by a grouchy, short-tempered spirit. Sometimes foods that may not be to our exact liking, poor sleeping arrangements and pressure of the constant presence of others or a push to get the job done, can cause irritation. Each day pray that the Lord will keep each team member in harmony throughout the camp. **All the pleasant memories can be dimmed and overshadowed by one bad attitude in the group.**
 - B. **BE FLEXIBLE:** We do our best to plan in detail, but many circumstances cannot be foreseen which cause changes. Alaska's weather, shipping, unique project problems sometimes demand last minute changes. Roll with the punches of the day and enjoy whatever is assigned.

- C. **DRESS:** Alaska’s bush standard of dress is very relaxed. It is usually determined by weather and the remoteness of the project. For the most part, everyday work dress would be sturdy work clothes such as jeans, khaki style work clothes, flannel shirts, sweatshirts, etc. Warm socks and a warm jacket should be packed because cool weather may be encountered. Rain gear is always needed and often rubber knee boots are especially useful. A cap or hat may be needed. For camp services, casual pants, or jeans and shirt are the order of the day. **Please see page 20 and 21 for complete Dress Code. Group leaders, please make sure all your group knows this information.**
- D. **PERSONAL CONDUCT:** always, conduct yourself as Christian men and women. Tobacco of any kind, “language”, habits that do not glorify God, disrespect to leadership, team member, local person, or host will not be tolerated. Always remember we are representing your local church, the Assemblies of God, Camp AN, and above all Jesus Christ.
- IV. **GET ACQUAINTED:** The better we know each other, the more we will appreciate each other and be able to share our concerns and reach our goals. Include everyone in the group as much as possible and get to know the Camp AN team members and campers. Working among Alaska’s Native villagers, you will find the people and their culture to be of great interest.
- V. **YOUR HOST:** The Camp Director, Missionaries Jim and Linda Schulz, will serve as you camp host. While all the comforts of home will not be afforded to you in this rugged camp setting, you will be made welcome, wanted, and every effort to make you comfortable will be made. Because we will be working and living in close quarters, a remote location, without many “conveniences”, the following suggestions are offered:
- A. Make no demands – only requests. Your host will be happy to make you as comfortable as possible.
- B. Respect all members of the Camp team as well as each camper.
- C. Cooperate with the Camp schedule—always fit in.
- D. If everything is not satisfactory, try to adjust.
- E. If you are you having difficulty with the Camp “accommodations” or any part of the Camp program, do not complain to others, speak directly to your Camp Host/Director.

- F. Uplift the staff and campers around you. Encourage them spiritually. You never know what struggles they may be going through. Pray with them, enriching their lives. You have just made a friend for life.
- VI. **BE ACCOUNTABLE:** When you desire to leave the campsite, please let the Camp Director know. It is helpful to get permissions first. Please, always make yourself amenable to leadership. This is pleasing to the Lord, helps keep the project going, and ensures a good and safe camp for all.
- VII. **SCHEDULING:**
- A. Each day, know and participate in the scheduled activities.
- B. Participate in each mealtime. It makes for great relationships with the campers and staff and helps the camp cook to know for how many he/she will be cooking.
- C. Because of the nature and remote location of the camp, there are no “off-hours.” To properly care for the many campers, ensuring their safety physically and spiritually, and for the physical needs of the camp, you are on duty 24 hours each day.
- VIII. **TRANSPORTATION:** Each Camp A.N. worker is responsible for their own transportation from their home to the village of Emmonak, Alaska and return. The Camp will provide boat transportation from Emmonak to the camp and return.
- IX. **SIGHTSEEING:** Each person or group may choose sightseeing activities as desired. These activities should be done prior to coming to the camp or following their time at camp. A list of sightseeing activities and places will be enclosed. All sightseeing is arranged by individuals or groups, and they are responsible for any financial responsibility and transportation.
- X. **PROJECT:** At the conclusion of this document, you will be provided with a complete description of the work you will be doing. If you are providing finances for the camp, it is best to send the money well ahead as materials must be ordered and shipped, many times, months in advance. Please do your best on the project assigned to you. For the most part, others will have preceded you or will follow you. Leave the camp in good shape, having followed closely the Camp Director’s directions and project plans. This will ensure a good camp for those who may follow you.
- XI. **MAPS:** Each project should be cleared by the Alaska leadership and the MAPS office. MAPS has notified us that churches wishing to receive World Ministries Giving credit can receive it when the project, the MAPS team (church) and the finances have been cleared and processed with the MAPS office (1445 Boonville Ave., Springfield, MO 65802). Insurance is also available through the MAPS office.

- XII. **MINISTRY TOOLS AND EQUIPMENT:** Mark and be responsible for your equipment. The project may have tools and equipment available, and you are welcome to use them. Take good care of them so that they can be used by others as well. Contact the Camp Director for specifics on tools and equipment that will be needed for your project assignment.
- XIII. **REPORT:** any accident or illness **immediately** to the Camp nurse and director. **Each team member should provide Camp Nurse or Director with any health issues or concerns before beginning the trip.**
- XIV. **ARRIVALS AND DEPARTURES:** Notify the Camp Director of your arrival and departure time into Anchorage Alaska and whether or not you will need to be met at the airport and have overnight accommodations before traveling to the village of Emmonak. Please specify: (see page 18 for how to travel)

ANCHORAGE ARRIVAL INFORMATION

- A. Airline _____
 B. Flight # _____
 C. Date _____
 D. Time _____
 E. Number in party _____

ANCHORAGE DEPARTURE TO EMMONAK INFORMATION

- _____

EMMONAK ARRIVAL FROM ANCHORAGE INFORMATION

- F. Airline _____
 G. Flight # _____
 H. Date _____
 I. Time _____
 J. Number in party _____

EMMONAK DEPARTURE TO ANCHORAGE INFORMATION

- _____



XV. **ASK QUESTIONS:** This information is provided for your benefit. No doubt some needed piece of information will be omitted. **Please ask!** We want you to be as knowledgeable as possible about the project in which the Holy Spirit has directed you to participate. We count it a privilege to work with you in His vineyard. Let us know if you have questions or if there is any way we can help make your trip and ministry more profitable.



Sightseeing

With every part of Alaska full of marvelous sights, it would be difficult to include them all. Most flights into Alaska come through Anchorage and team members often overnight in Anchorage before going to or returning from their project. An extra day or two will prove to be a great adventure. Included here are sights to be enjoyed around and in Anchorage.

Anchorage

Anchorage Bureau Log Cabin Information Center provides a great starting place. Complete information on the region can be obtained here.

Anchorage Museum traces years of Alaskan history.

Earthquake Park, where you can view the damage and learn of the strongest earthquake to hit America. There is an excellent view of downtown Anchorage for pictures.

Experience Theater, where you will relive the 1964 earthquake

Eklutna Village Historical Park where you will see the colorful spirit houses of the Athabascan Indians.

Turnagain Arm, south out of Anchorage where sheep, moose, whales, birds can be seen and sport salmon fishing in season is plentiful. The view of the Turnagain Arm/Cook Inlet is gorgeous, and the mountain ranges are magnificent.

Girdwood is home of Alyeska Ski Resort and Village. At **Crow Creek**, visit the 1888 gold mine and pan for your own gold.

Portage Glacier, where many glaciers, icebergs, a fascinating display of the history and movement of the glaciers and an excellent award-winning documentary film (a must) can be seen in Begich/Boggs Visitor Center at the glacier. A boat ride can be taken up to the face of the Glacier.

Alaska Native Heritage Center

<https://www.alaskanative.net>

Alaska Native Heritage Center 8800 Heritage Center Drive Anchorage, AK 99504
(907) 330-8000 (855) 330-8085.

Kenai Peninsula

From the glacier, drive around the tip of **Turnagain Arm**, over Turnagain pass and though grand and majestic mountains and on to the Kenai Peninsula. The Kenai Peninsula is home of world-famous salmon fishing. Many forms of wildlife are often seen on this drive.

Longer trips

Longer excursions can be taken to **Prince William Sound** and its glacial waters.

Valdez is the terminus of the 800-mile Alaska oil pipeline. The views driving over Thompson pass are exhilarating.

Denali National Park, (formerly Mount McKinley), as it is also known, is a view and trip worth the taking. It is a 4-5-hour drive north of Anchorage. The mountains, wildlife, and scenery leave all who visit it in awe.

Hatcher Pass, north out of Anchorage, is a spectacular drive that takes pretty much the whole day. A great trip for scenery and picnicking.

Fishing is always one of the great experiences of Alaska. Of course, your success at catching salmon will depend largely upon the time of your trip. As all true fisherman know, fishing varies from day to day, and your prize catch is dependent upon when the fish are running. Fishing the Kenai is a favorite. However, it is also known as combat fishing. Because it is accessible from Anchorage by road, many tourists, and local Alaskans fish the rivers of the Kenai Peninsula. Charter boats are available and often do quite well. Charter flights are also available to the more remote and inaccessible areas. *A valid Alaskan fishing license and salmon stamp is required.*



Your Alaska Project

Thank you for choosing to work with one of the great Alaska MAPS approved projects. The following contains vital information regarding the specific project you and the Holy Spirit have chosen to work with us on. We value the leading of the Holy Spirit and your choosing to co-labor with Alaska for souls. May God bless you as together, we labor for the Master.

For additional information regarding your project please feel free to contact Missionary Jim Schulz.

Project: Camp Agaiutim Nune (“The Place of God”)
Project Missionary: US Missions, Jim Schulz-- Camp Director
US Missionaries/Assistant Camp Directors:
Phillip Boswell & Terry Hull
Church/Ministry: Alaska Assemblies of God Missions
Mailing Address: 1048 W. Int’l Airport Rd. #101
Phone: (907) 223-3660 or (907) 278-4567
Fax: (907) 245-0492 or (907) 278-4560
E-mail: jimschulzalaska@gmail.com
pastorphillipb@gmail.com & thull@voicetothevillage.net

Assignment for: Camp Coaches and Staff

DATE: To be in Emmonak no later than 24 - 48 hours prior to the week(s) of camp you will be working. **You will be picked up at the Yukon Delta Assembly of God, Emmonak, Alaska, by boat and taken to the camp. It is an approximate 35-45-minute boat ride. Camp schedule is as follows:**

Construction—To begin June 5
Camp Set up – June 5-11
Kids Camp—June 12-17
Teen Camp—June 19-25
Teen & Family Camp Finale—Sunday June 25
Pack Camp June 26-27
Fly Home—June 28
Staff Appreciation Cook-Out in Anchorage June 30

Tasks will be assigned to you as need warrants, including helping with “dorm” responsibilities with campers, kitchen, maintenance, and activities supervision.



WHAT YOU SHOULD AND SHOULD NOT BRING:

1. Three or four complete changes of clothing (for camp staff staying longer than one week, laundry facilities will be provided.)
2. **Coat** (temps will be from mid- 30's to 70, the open boat ride to and from camp can be very cold), work gloves, good support work shoes and/or tennis shoes, **rubber boots, raincoat/pants**, swimsuit, cap or hat.
3. **A single bed size air mattress.** Recommended are the inflatable ones that are like a single mattress with velour on one side, a mattress pad is a necessity, a warm sleeping bag (with a comfort range of 0 -30 °), and a pillow.
4. Personal hygiene items: Soap, shampoo, toothbrush, toothpaste, washcloth, towel, Kleenex, insect repellent (recommend Musk oil or Cutter's repellent), large plastic bags for dirty laundry. **Do not bring any thing that requires electricity unless prior approval from the Camp Director.**
5. Personal medications. **Please notify Camp Director and Camp Nurse of any potential health problems, including medications you may be taking. Please bring full instructions for all medications.**
6. **DO NOT BRING FIREARMS, LARGE or SMALL KNIVES** (All coaches must turn in all knives during camp), caution is given to bringing a lot of personal items, and camping equipment



YOUR ASSIGNMENT: **Your assignment will be camp staff/coach.**

Careful attention and supervision must be given to the health, safety, and general welfare of all campers. Your responsibilities will be, depending on needs and your MAPS approval, to serve as camp worker/coach—helping with boys/girls as coach, in the kitchen and mealtime, and assist with activities and general help. If you play an instrument or lead in worship, please let the Camp Director, Jim Schulz, know.

Please, please be in prayer for the needs of the camp and for the spiritual impact that needs to happen in the lives of the youth and families in our villages.

Camp A.N. has been in existence since 1996 and continues to be a growing camp. Our first year saw 51 total campers (Kids and Teen Camps); the second year saw 83 total campers. The third year had 140 campers including the new Family Camp. Our now 27 years have continued to grow and see a rich spiritual harvest. Due to the covid impact for the summers of 2020 and 2021, we were not able to have camps. Please be in prayer with us for God's favor and open hearts and minds for God's revival in 2023.

I consider it a privilege to have you as a vital part of the Camp A.N. family. May the Holy Spirit freshly anoint you especially for ministry to the many Alaskan Native youth you will touch and minister



JOB DESCRIPTION

MAPS is an arm of the Assemblies of God US Missions Department. It provides an avenue that non-appointed missionaries can get involved in mission's ministry. MAPS—Mission America Placement—works with the missionary providing personnel resources and the screening process necessary to participate in the appropriate level of ministry. **Many church teams and/or individuals will want to use this process for application.** This provides the camp with a degree of security and confidence in each worker and the ability for staff and teams to secure insurance. You may contact the MAPS office at: MAPS/US Missions, 1445 Boonville Ave., Springfield, MO 65802-1894 or online at: <http://usmaps.ag.org/>

Serving missions within the Assemblies of God is a privilege. This job requires a level of spiritual maturity and physical stamina. There are great treasures to be won for Christ. Camp Agaiutim Nune provides an excellent setting for village young people. Those working with Camp Agaiutim Nune must appreciate young people (their antics and energy) and have a passionate desire to see God meet them in salvation and Pentecost.

QUALIFICATIONS FOR ALL STAFF

1. All staff/coaches must be 18 or older.
2. Staff may apply for and receive MAPS clearance. (If applying through MAPS see above for information)
3. Staff **must have completed** the Alaska Ministry Network (Alaska District Council) screening form and have been cleared through the Alaska Ministry Network background checking process. There is a \$20 fee for processing the background check. You may request a screening form from jimschulzalaska@gmail.com or go to the **Alaska Ministry Network link** <https://storage.snappages.site/wiuv3lhfrx/assets/files/2020-worker-screening-.pdf>

Your screening form will be kept CONFIDENTIAL and must be filled out by applicant in its entirety and signed by your pastor and returned with \$20 background check fee to:

**Camp Agaiutim Nune
Jim Schulz
1048 W. Int'l Airport Rd. #101
Anchorage, AK 99518**

No worker will be allowed on the campus without the application form, screening form and background check being completed.

4. Worker must have a mature Bible knowledge for the purpose of ministering to young people.
5. Worker **must have a personal financial basis for his/her travel and personal expenses to and from Emmonak.**

GENERAL RESPONSIBILITIES for ALL

1. To work in a harmonious relationship with the camp director and all other camp staff.
2. To gladly fulfill assignments that may be given.
3. If assigned to be a dorm coach: to give devotions, general oversight of assigned campers, and to know the whereabouts of all assigned campers at all times.
4. Report all illnesses and accidents to the Camp Nurse and Director immediately.
5. To participate in all classes, services, and events.
6. Dress code will consist of dressing appropriately for a rustic camp environment no “cut-offs”, short-shorts, or any clothing that may be non-conducive for a “healthy” environment. (See last two pages for more details)
7. Do not bring radios, tape players, or CD players, or iPod unless these are to be used in ministry.
8. Read the Camp Agaiutim Nune STAFF MANUAL.
9. Come spiritually and physically ready to enjoy Camp Agaiutim Nune and the young people from Alaska’s villages.

Where in the world is...

Camp Agaiutim Nune?

Camp Agaiutim Nune is on the Akularak River approximately 17 miles up the Yukon River from the village of Emmonak. It is set in a beautiful natural setting in a totally undeveloped area of the Yukon Delta. Camp A. N. is not connected to any village electricity, running water or sewer, telephones, stores, or any other convinces in the area. The camp has its own generator with limited power. All drinking water is either brought in from the village of Emmonak or processed through the Camp's water purification system. Our only neighbors are a handful of fish camps and the wildlife of the area.

It is a rustic camp using tents for many of its facilities. A 5,000 square foot facility, "The Tabernacle" was built during the summer of 2015 and is used for chapel, dining, kitchen and nurse's station. Four large tents (over 500 sq. ft. each) provide dormitory facilities. There are 7 other tents of various sizes that are used as needed.

The Old Chapel Tent:



The new facility housing:
Chapel, kitchen, and dining
hall.
"THE TABERNACLE"

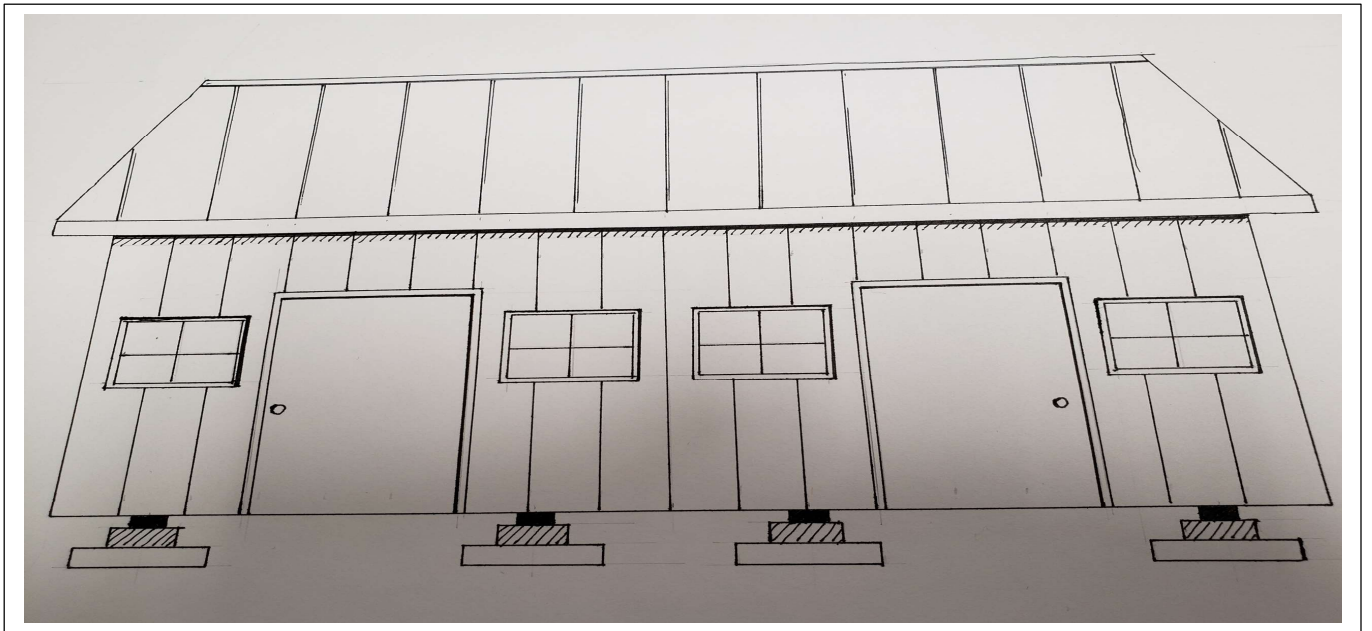


New Dorm Cabins

Beginning with the summer of 2023, we will be building one dorm cabin each year for five years. We have been sleeping in tents since the first year of camp, 1996. Now God is making it possible for us to begin building these new dorm cabins. Once completed, they will also have bunkbeds instead of sleeping on the floor.

This is another major miracle that God is providing for Camp A.N. and the campers. Each year, a dorm cabin can only be built as God provides. Please join with us in prayer for God's provisions that all five dorm cabins may be built. "To God be the Glory!"

Below is an artist sketch of what the new dorm cabin will look like. Each dorm cabin will comfortably house 24 persons.



One of four present dorms



A full house



Preparing for new dorm cabin

TRAVEL

“Fortunately,” you cannot directly get to Camp A.N. by driving from where you are. Part of the beauty of Camp A.N. is its absolute remoteness. It can only be reached by air and boat.

There is presently only limited airline service for Anchorage to Emmonak: Alaska Airlines to Bethel connecting to Grant Aviation to Emmonak . Each of the airlines will have baggage limits. I recommend that anything that you need more than these baggage limits allow be sent parcel post, insured to: **Attention: Your Name, Camp A.N. Yukon Delta Assembly of God, Box 145, Emmonak, AK 99581.** Boxes being mailed should be mailed 30 days prior to your arrival to insure they are there when you arrive. Mark your boxes clearly!

It will be necessary for you to plan financially for the return home of your excess personal belongings VIA parcel post as well. The Emmonak Post Office will only take cash (sometimes credit/debit cards)—no checks.

Plan your travel into Anchorage through your local travel agent or personally—arriving in Anchorage one day before your scheduled date of arrival into the village of Emmonak. Overnight accommodations will be provided at Crossroads Assembly of God (bunking in classrooms) unless you specifically instruct otherwise which will be at your own expense.

Alaska Airlines-- www.alaskaair.com.—Flying with Alaska Airlines from Anchorage to Bethel, Alaska, usually requires a several hour layover in Bethel, then flying with Grant Aviation from Bethel to Emmonak— <http://www.flygrant.com/> . And, of course, return in reverse order. **Reservations for Alaska Airlines can be made at 1-(800) 426-0333 or through your ticket agent.** Check web page below. **Alaska Airlines Anchorage to Bethel and return— current prices can be gotten at www.alaskaair.com.** **Grant Aviation-- www.flygrant.com.** They may also be reached at 1-888-fly-grant or 1-888-359-4726 or 1-907-543-2000. Schedules change with seasons so make sure you check and plan ahead.

Using the above web sites please check current weight limits and number of pieces you can check. I will say it again. **It is best to ship the bulk of your personal effects VIA parcel post mail directly to:** Yukon Delta Assembly of God, Box 145, Emmonak, AK 99581, **Atten: (Your Name)-Camp AN.** You should allow at least **four weeks** for delivery. This would allow you to travel with only a small bag that could take care of your personal needs until you arrive at camp and gain possession of your shipped supplies.

Upon arrival in Emmonak, every attempt will be made to pick you up at the airport with a “four-wheeler” if possible. However, be prepared to possibly walk (possibly muddy conditions) into the village (approximately 1 mile) to the Assembly of God church where you will wait to be picked up by the camp boat.



Notice to ALL Camp Agaiutim Nune workers regarding Dress Code

If you are coming with a team, I am asking the team leaders to help each of their team understand the significance of this and to help ensure this code is adhered to.

The minds and lives of the kids and teens that Camp AN ministers to are bombarded by everything Satan has to influence for sin. These kids/teens are influenced by everything on satellite TV, videos, and internet. One of the great pieces of spiritual armor that Paul gave us under the direction of the Holy Spirit is the “Helmet of Salvation”. Its purpose to protect the head, that “control center” of our bodies. The “eye gate” is a powerful access into our influences. It is important that the few days of influence that God gives us with these kids and teens is as guarded as can be. We will be careful to alert you during our times of “orientation” concerning bodily contact and its emotional implications and I want to stress the following, also, as you are preparing to arrive at camp. Please be modest in all your dress--comfortable but conservative. Ladies, please avoid tight clothing pants or tops—these can be suggestive. Your body is the Lord’s and is also to be preserved for your marriage and not as an object of observance by others. I realize we live in a far less modest world today; but your presence on the property of Camp A.N. is a ministry and testimony. Everything about us must exemplify Christ and His Word.

Girls:

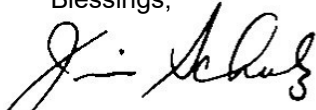
1. Outfits that reveal mid-drift, cleavage or underwear are not considered modest. These rules are all simple and easy to follow. No tank tops except when swimming to cover a 2-piece swimsuit.
2. Please make sure your slacks are at least knee length. No shorts. Cover up those tight pants and leggings. Not all leggings are created equal, and we have experienced too many that leave nothing to the imagination so PLEASE put on a long t-shirt to cover your back-side if you want to wear spandex or leggings. No miniskirts.
3. When swimming, wear a one-piece swimsuit if possible. If you have a two-piece swimsuit, wear a t-shirt or tank top over it. Swimsuits are to be worn for swimming only. Tankinis are acceptable too.

Guys:

1. Please make sure your slacks are at least knee length. No shorts. No tight pants.
2. When swimming, wear a swimsuit or suitable shorts. Swimsuits are to be worn for swimming only. No tank tops except when swimming.
3. When you leave your dorm, you **MUST** have a shirt on. Outfits that reveal mid-drift, or underwear are not considered modest. No tank tops except for swimming.

I deeply appreciate each of you and the sacrifice you are making financially, physically, timewise, and spiritually to minister to the lives of those in western Alaska for eternity. Camp AN could not exist without the volunteer staff that comes each year. Please be earnestly in prayer for the lives of the campers this summer to whom you will be ministering. Terry Hull will be alerting you to a time of prayer prior to camp.

Blessings,



Pastor Jim